

1, 2, 3, **VOTE!**

Voting with the ES&S iVotronic

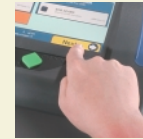
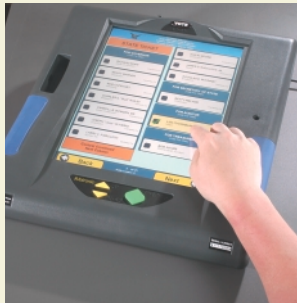
1 ACTIVATE BALLOT

You or a pollworker will activate your electronic ballot by inserting it into the appropriate slot. Next, touch language of choice with your finger.

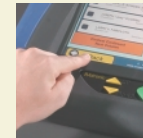


2 SELECT CANDIDATE

To select your candidate, touch the box next to the name. To de-select, touch box again. The iVotronic will not allow you to vote for more people than may be elected to any one office.



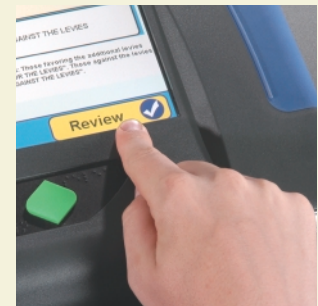
Touch "Next" in lower right corner to navigate forward through the ballot.



Touch "Back" in lower left corner to navigate backward through the ballot.

3 REVIEW BALLOT

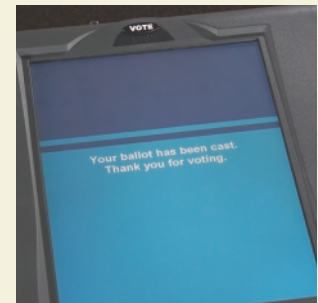
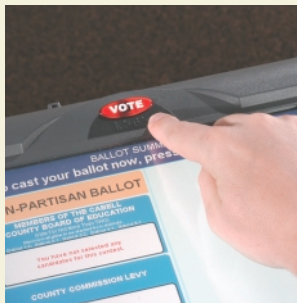
After completing last ballot page, touch "Review" and carefully review the selection review screen. To change or make a new choice, touch box next to candidate or office name, and then touch box next to new selection.



VOTE!

When finished, press the flashing red "Vote" button to cast your ballot.

"Thank You For Voting" screen means you have properly cast your ballot.



Election Systems
& Software

MAINTAINING VOTER CONFIDENCE.
ENHANCING THE VOTING EXPERIENCE.



EXPERIENCE
RELIABILITY
SECURITY
INNOVATION